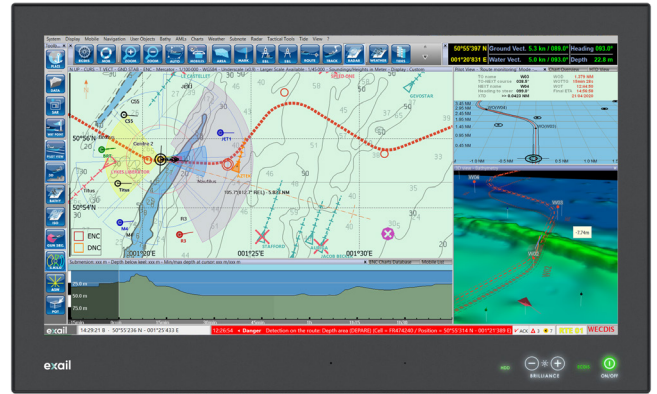


Gecdis-W

WECDIS (Warship Electronic Chart Display and Information System)

Gecdis-W provides safe navigation and improved tactical situational awareness through a flexible, interoperable, and certified solution, incorporating a comprehensive set of military-specific features designed to process and display critical information.

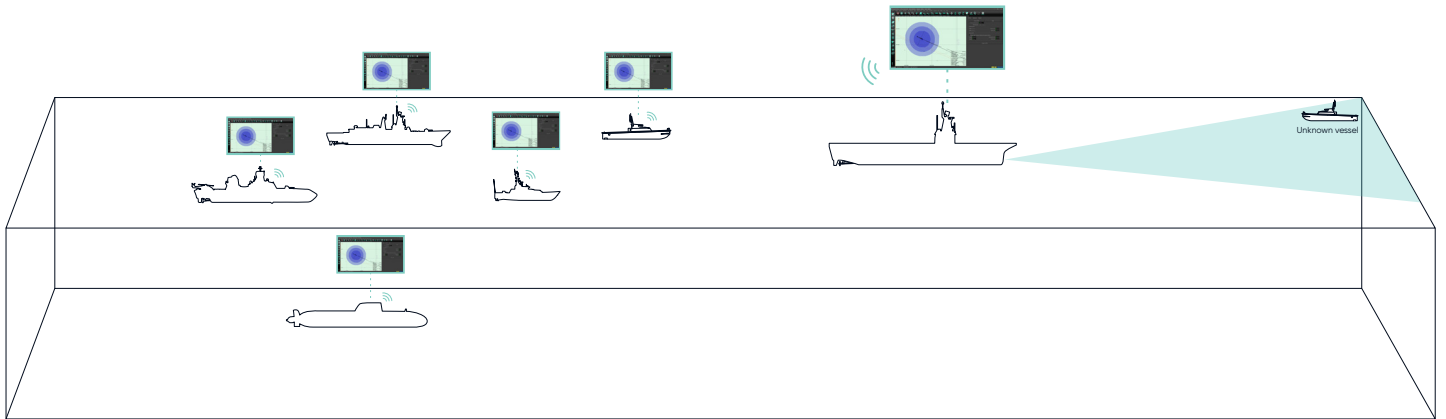


BENEFITS

- ECDIS certified
- NATO STANAG compliant
- ITAR-free
- Field-validated for over 20 years
- High level of interoperability
- Long-term In-Service Support (ISS)

APPLICATIONS

- Navigation
- Surveillance & Interception
- Mine warfare
- Search and Rescue
- Fleet naval operations
- Submarine operations
- Hydrography & Special Ops



By tracking and classifying over 1,000 targets using military symbols and sharing them with the on-board Combat System, Gecdis-W facilitates precise operational coordination and enhances interoperability among allied forces through real-time Blue Force communication, via W-AIS.

Product subject to arms export regulations

contact@exail.com | www.exail.com
EMEA +33 1 30 08 88 88 | Americas +1 888 600 7573 | APAC +65 6747 4912

exail

INTEGRATION CAPABILITIES

- Integration with Radar
 - Overlay & Tracks
- Integration with CMS
 - Tracks & Routes exchange
 - Tracks classification exchange
 - Bottom objects exchange
 - Bridge pointer bearing line
 - Tactical areas display
 - Requested maneuver and route
 - Mine warning display
 - Torpedo warning & tracking data display
- Integration with W-AIS
 - Full integration
 - Command-control from Gecdis-W
- Integration with Navigation Systems
 - Connection with IBS (IEC 61924 Ed. 2 compliant)
 - Communication with VDR, BAM, BNWAS, NAVTEX
 - Automatic workstation data synchronization (charts, routes, user objects, tactical data)
 - Automatic workstation display synchronization
 - Backup/restore management

MAIN ECDIS FEATURES

- ENC/ARCS/DNC charts representation
- Polar projection (North and South)
- Route planning and monitoring
- Anti-grounding detection
- Route Plan Exchange (RTZ)
- Search And Rescue (SAR)
- Anchor watch management and alert
- Go / No Go area
- Position fix
- Navigation tools (EBL, ERBL, VRM, LDL...)
- Display plausibility and integrity of the CCRS data from the IBS

WARSHIP FEATURES

- AML charts representation (IWC, CLB, ESB, LBO, MFF, RAL, SBO...)
- Common Geographic Reference System (CGRS)
- Coordinate systems (GARS, MGRS, UTM)
- Gun sector
- Dived navigation
- Anti-Submarine Warfare
- Moving Haven (MHN)
- Submarine bathymetric profile
- 2W
- Tactical grids
- Tactical screens
- Automatic CMS targets classification (vessels, mines, torpedos...)
- W-AIS command-control

ADVANCED FEATURES

- Celestial navigation
- Depth Line Running Fix (DRLF)
- Grib weather overlay
- Tide calculation and display
- Advanced user objects functions and filters (mark, area, line, spline, sector, ...)
- Radar overlay (up to 5 radar sources, ASTERIX CAT-240 compatibility)
- PIM plan
- Predictive outline
- Collision risk detection
- Risk detection in user navigation areas
- Multi-mobile and multi-fleet management
- AIS/ARPA correlation with priority management
- Ship management and target tracks
- Replay of fleet and mobiles situations
- High-performance and fast 3D bathymetric and bottom discrimination view
- Statistical Pool of Error (SPoE)
- 2D colored surface and isoline overlay (bathymetric information displayed in 2D)
- Real-time recording and display of bathymetric data from depth sounders and/or multibeam

Product subject to arms export regulations

contact@exail.com | www.exail.com
EMEA +33 1 30 08 88 88 | Americas +1 888 600 7573 | APAC +65 6747 4912

exail

NAVIGATION SYSTEM

- Connection with INS (IEC 61924 Ed. 2 compliant)
- Communication with VDR, BAM, BNWAS, NAVTEX
- Automatic workstation data synchronisation (charts, routes, user objects, tactical data)
- Multi-function display management
- Display mode workstation synchronization
- Backup/restore management

HARDWARE COMPATIBILITY

Operating system:

- Windows 10 and Windows 11
- Minimum configuration: RAM 2GB, HDD 40GB, CPU Intel i3
- 1 USB port for the software protection dongle

COMPLIANCE

| IMO | IEC | IHO | NATO |
|-----------------|--------------------|----------------------------|-----------------------|
| IMO A.694(17) | IEC 60945 Ed. 4 | IHO S-52 Ed. 3.1 | NATO STANAG 4564 Ed.3 |
| IMO MSC.191(79) | IEC 61162-1 Ed. 5 | IHO S-52 (Annex A) Ed. 4.0 | NATO STANAG 7170 Ed.3 |
| IMO MSC.232(82) | IEC 61162-2 Ed. 1 | IHO S-57 Ed. 3.1 | |
| IMO MSC.302(87) | IEC 61162-450 Ed.2 | IHO S-63 Ed. 1.2.0 | |
| | IEC 61174 Ed. 4 | | |
| | IEC 62288 Ed. 3 | | |

IN-SERVICE SUPPORT (ISS)

- Fast technical assistance
- Obsolescence management
- Normative monitoring (ECDIS, STANAG)
- Regular software updates
- Configuration management
- Safety storage for maintenance
- Training center & simulator
- Operator and maintainer training
- Training of navy trainers

Product subject to arms export regulations

contact@exail.com | www.exail.com
EMEA +33 1 30 08 88 88 | Americas +1 888 600 7573 | APAC +65 6747 4912

