

**exail**

**R7  
REMOTELY  
OPERATED VEHICLE**

# HIGH EFFICIENCY AND VERSATILITY FOR MODERN MILITARY OPERATIONS

## R7 Remotely Operated Vehicle (ROV)

The R7 is a new generation ROV designed to fulfill a wide range of military missions. This remotely operated vehicle combines the compactness and ease of deployment of a mini-ROV with the efficiency and payload carrying capacity of an observation class ROV.

Thanks to its digital architecture, the R7 can be equipped with a large choice of sensors, tools and payloads in order to perform the most demanding missions in the most demanding conditions.

The R7 is able to operate in any direction and to control its pitch and roll with the possibility to maintain its position. With its Polypropylene frame, and its stainless steel equipment, the R7 is the perfect compromise between ruggedness and efficiency.

Reliable, easy to operate and maintain, the R7 is the perfect tool for new generation military operations.

- Versatile by design
- Highly manoeuvrable
- Highly accurate navigation
- Easy to deploy, operate and maintain
- 300 m cable to operate at high depth

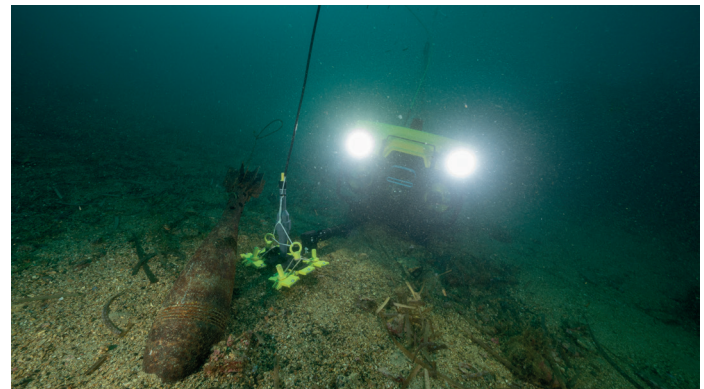
### Specifications

Dimensions (mm)	L 780 x W 551 x H 424
Weight in air	< 35 kg
Propulsion	7 DC thrusters, 4 horizontal (vectored) / 3 vertical (for correct attitude)
Movements	In 3 axes + rotation on its own axis
Forward speed	3 knots (In 0 knots current)
Operating depth	300 m in sea water

## Versatile by design

Relying on more than 50 years of experience in underwater systems, the R7 is the perfect tool to perform a wide range of underwater missions in the most cost-effective way.

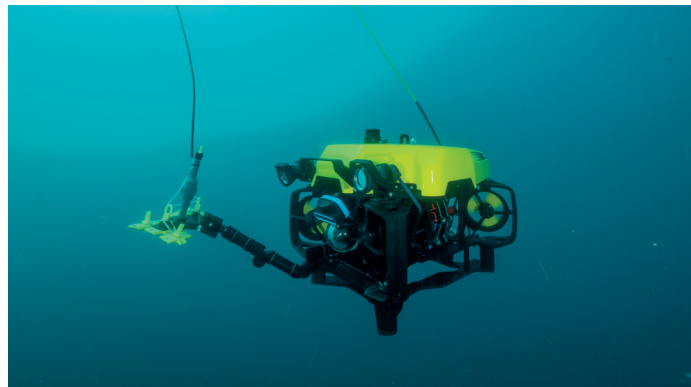
- Search and rescue
- Black box recovery
- Forensic gathering
- UXO depollution
- Harbour monitoring and protection
- Wreck inspection
- Hull mine detection, localization and identification
- Soil mine detection, localization and identification
- UXO detection, localization and identification
- Diver assistance and communication
- Hull and chains inspection



## A large choice of payloads

Because modern military operations are more demanding than ever, the R7 is offered with a wide choice of payloads, in order to provide the efficiency required anytime, anywhere.

- Highly accurate navigation system
- Powerful lighting system
- Real-time processing full HD camera
- Ultra-sensitive inspection TV camera
- Full HD navigation TV camera with wide angle
- Full HD backward camera
- Sonars: navigation, imaging and side scan
- USBL positioning system (compatible with the Exail Gaps range)
- Electric manipulator arm with three or five functions
- UXO depollution device



## Man machine interface

Because the R7 end users need to be quickly operational and to concentrate on their mission, Exail designed a simple, light, and intuitive Human Machine Interface. The R7 is provided with a compact 15" FHD touch screen interface in order to control and display all ROV parameters and sensors data in real time.

- Sunlight readable touch screen interface
- Access to all ROV controls
- Display of video and payloads data
- Recording through computer's HDD
- Possibility to make screen captures
- Text generator
- Autodiagnosis
- Second monitor in option



# over 50 navies around the world



[www.exail.com](http://www.exail.com)

**exail**