

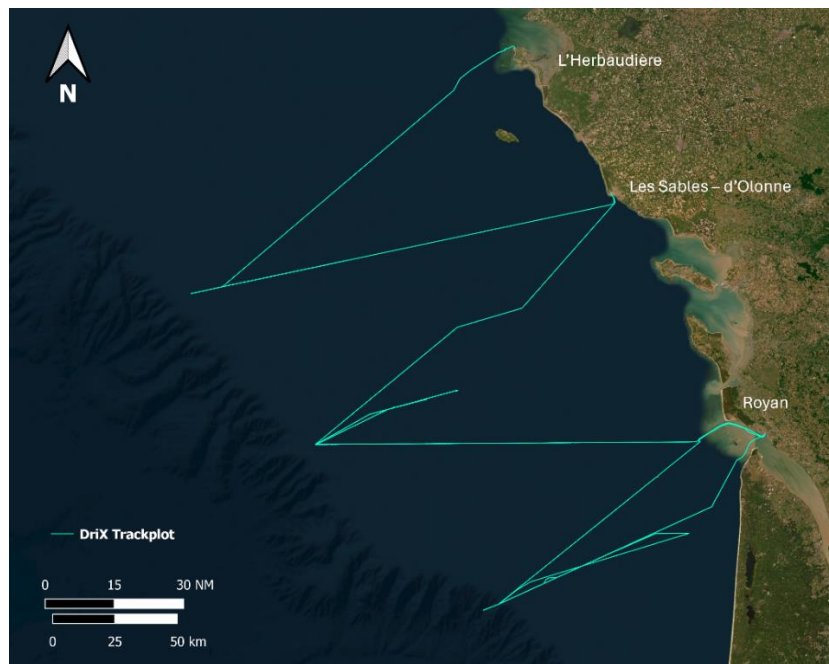
# DriX operates 100 nautical miles from the shore to assess biomass in the Bay of Biscay

Following the immense success of the 2023 campaign, Exail was contracted by Ifremer in early 2024 to carry out a similar operation, surveying large areas of the Bay of Biscay along the French Atlantic

## PARTNERS



In February 2024 and for the second time, DriX was equipped with multiple sensors to conduct a biomass assessment survey in the Bay of Biscay off the coasts of France. This operation, just like the previous year, was entirely remotely supervised from Exail's Remote Control Center in La Ciotat, 700 km away, using the Starlink communication system.

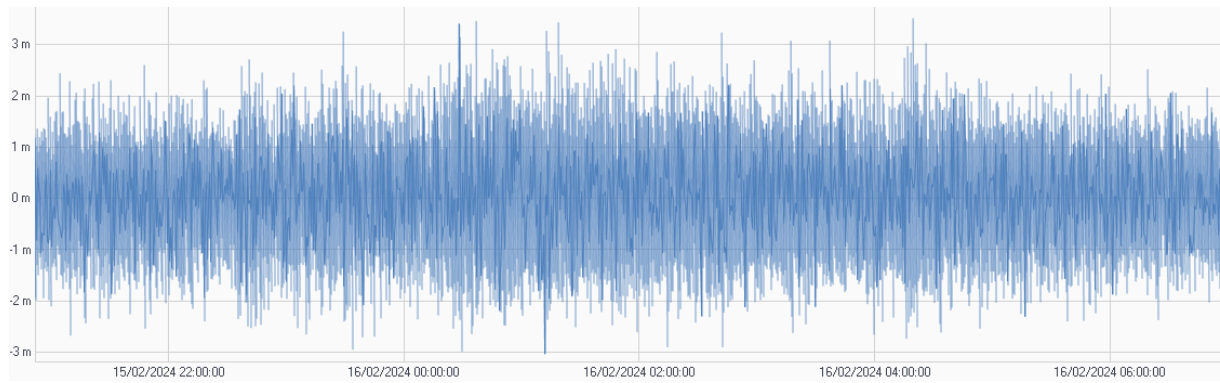


▲ Transects performed by DriX for the operation.

During the month of February, a difficult period to sail back and forth the bay of Biscay, DriX surveyed an extensive area, collecting scientific data providing crucial biomass information. DriX was fitted with multiple Simrad EK80 singlebeam echosounders, hydrophones, and pingers, in order to collect different types of acoustic data.

The transects and acquisition were performed during the day in conditions up to sea state 5, to a maximum distance of 85 nautical miles from the coast. At night, DriX sailed stand-by lines until sunrise when the survey would resume. In total, 760 nautical miles were sailed over four days.

## CASE STUDY



p Sea state 5 event – Real time Heave plot.

Another reason for this campaign, besides fish stock assessment, was to study the impact of acoustic devices on marine mammals, and specifically on dolphins. For this reason a particular attention was given to dolphins appearances around DriX, easily monitored with all the video streams & camera screenshots made possible with the high bandwidth provided by the Starlink system.

The acquisition of DriX data was performed from several places in France, where scientists could connect remotely, modify parameters and visualize real time data being collected.